

RAZE

RZMLB

MINI LEVER HOIST



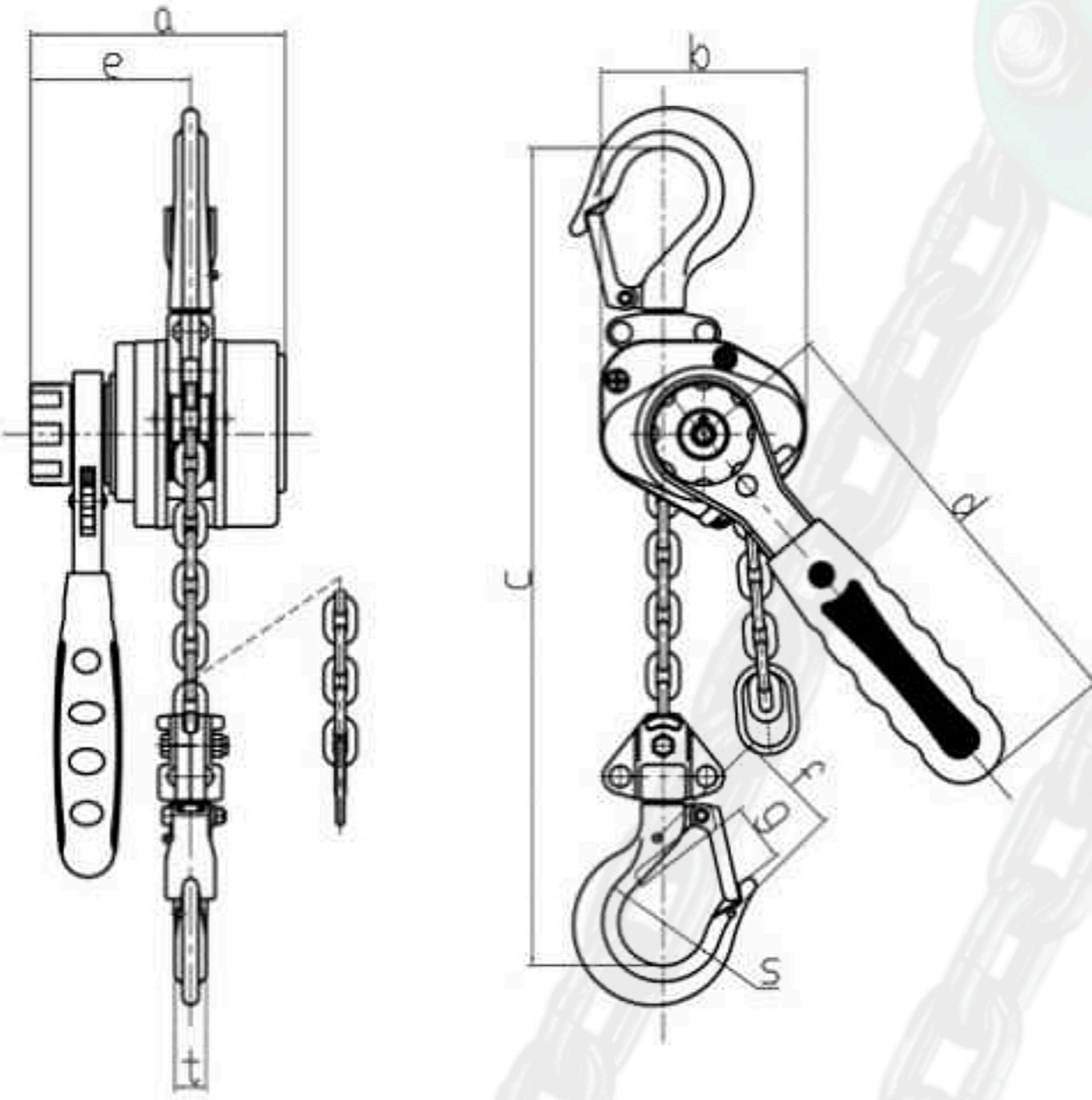
RZMLB

MINI LEVER HOIST

Product Introduction

Standard Features Include:

- Dual Speed
- Grade 80 case hardened alloy steel chain
- Aluminum alloy casting, features rigid structure and light weight
- Motor framed with radiant cooling fins, permits (dual speed 40/20%, 15%) duty cycle
- Electro-Magnetic Brake Controller, features simultaneous braking upon release of P.B. even under full load
- Limit Switch - Fitted at both top and bottom ends, shuts off power automatically to prevent load chain from running out
- Mechanical Brake - Advanced design, assures secure braking even under overload. In conjunction with motor brake, features "DOUBLE BRAKE SYSTEM" for safety and durability in hoist operation
- Magnetic Contactor - High performance non-fuse circuit breakers allow frequent trouble cycling with free operation
- Phase Error Relay - A specially designed electric board prevents motor from running at it reverse phased



MODEL	CAPACITY (TONS)	LIFT (FT)	CHAIN FALLS	LOAD CHAIN DIAMETER	NET WEIGHT (LB)
RZMLB-050-05	1/2	5	1	4	5.51
RZMLB-050-10	1/2	10	1	4	5.51

MODEL	DIMENSIONS (IN)								
	A	B	C	D	E	F	G	S	T
RZMLB-050-05	3.96	3.12	9.84	6.30	2.46	1.65	0.96	1.36	0.47
RZMLB-050-10	3.96	3.12	9.84	6.30	2.46	1.65	0.96	1.36	0.47